

NAMA Facility

On behalf of



Federal Ministry
for the Environment, Nature Conservation
and Nuclear Safety



Department for
Business, Energy
& Industrial Strategy



Danish Ministry
of Energy, Utilities
and Climate



7th Call FAQs and Clarifications

NAMA Facility Webinar

14 July 2020

Welcome to This Webinar

- Thank you for your interest in the 7th Call of NAMA Facility!
- **Today's objectives:**



Clarifications and FAQs for the 7th Call



Deep-Dive on selection criteria

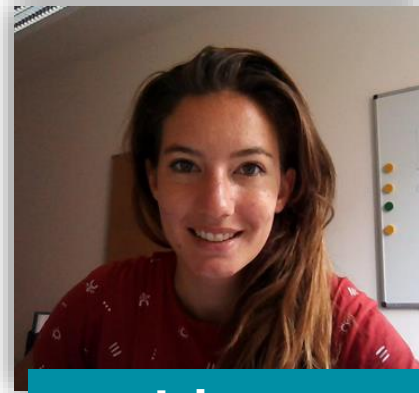
The NAMA Facility Webinar Team



Rita



Janka



Johanna



Alexandra

Technical Overview

1. Hide the Chat (disabled)
2. View the webinar in full screen
3. Go to **slido.com** and enter event code **#54218**
4. Enter your name and email address
5. Type your question and click enter
6. Or send us an email to **contact@nama-facility.org**

The image illustrates the technical steps for participating in a webinar. It shows a Zoom webinar interface with a slide titled "NAMA Facility 7th Call FAQs and Clarifications" and a Slido Q&A interface. The Slido interface shows the event code "#54218" and a "Type your question" input field. The Zoom interface shows the "1 Participant" status and the "Take Over as Presenter" button.

Structure of the Webinar

1. Basics on the NAMA Facility and its 7th Call
2. Implications of Covid-19 - Update
Q&A session
3. Deep-dive on selection criteria in 7th Call
Q&A session
4. Overview of selected FAQs
Q&A session

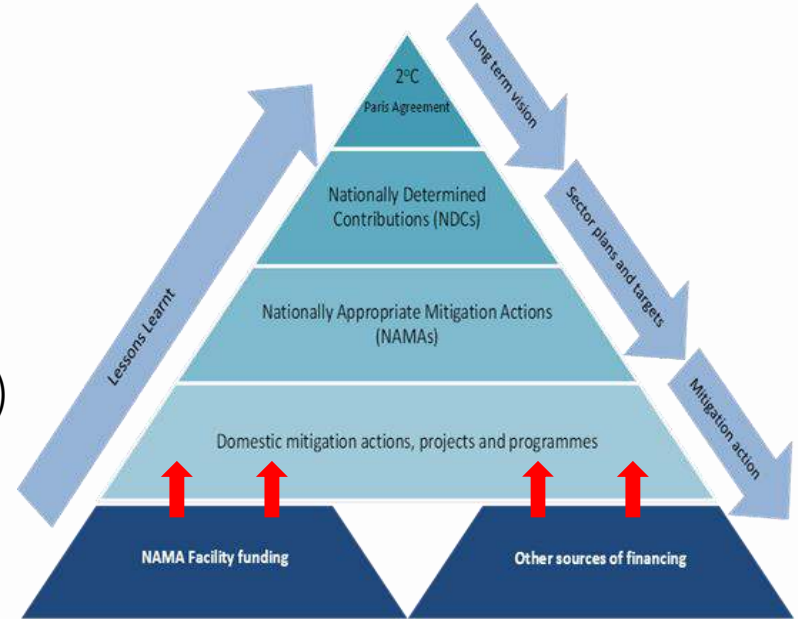
Structure of the Webinar

- 1. Basics on the NAMA Facility and its 7th Call**
2. Implications of Covid-19 - Update
Q&A session
3. Deep-dive on selection criteria in 7th Call
Q&A session
4. Overview of selected FAQs
Q&A session

1. Basics on the NAMA Facility and its 7th Call

- What We Support and Offer

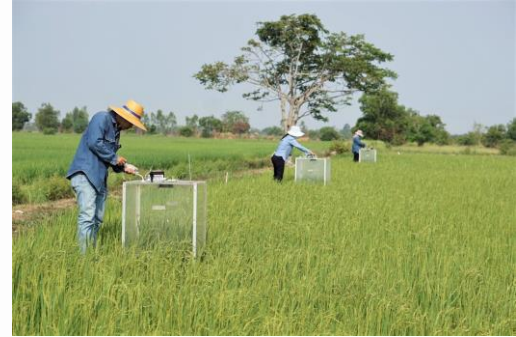
- Implementation of national climate strategies and NDCs via mitigation actions such as NAMAs. Transformational change towards carbon-neutral pathway
- Funding NAMA Support Projects (NSPs) as the most ambitious parts of these mitigation actions
- No regional or sector focus



1. Basics on the NAMA Facility and its 7th Call

- What Mitigation Actions We Are Looking For

- Country-led and embedded
- Within sector-wide programmes - specific NDC reference
- Tackling barriers: investment for carbon-neutral development
- Innovative self-sustaining financing mechanism that attracts investment



Copyrights: GIZ Thailand.

1. Basics on the NAMA Facility and its 7th Call - Eligibility Criteria



Timely submission



Completeness of documents



Documents provided in English



Implementation funding: EUR 5-20 million



DPP duration: either 10 or 15 months



Implementation duration: 3-5.5 years



ODA-eligibility of the country (see [DAC list of ODA recipients](#))



Additionality of the NSP

For further details check the [7th Call General Information Document](#)

1. Basics on the NAMA Facility and its 7th Call

- Main Changes Since the 6th Call

- Support of developing countries and emerging economies in their efforts to shift to **carbon-neutral development pathways**
- **Phased approach** to NSP implementation + **implementation time of 5 ½ years**
- **NSP Outline template** and **annexes** slightly **revised**

Structure of the Webinar

1. Basics on the NAMA Facility and its 7th Call

2. Implications of Covid-19 - Update

Q&A session

3. Deep-dive on selection criteria in 7th Call

Q&A session

4. Overview of selected FAQs

Q&A session

2. Implications of Covid-19

- Changes in the 7th Call - Timeline

- Based on feedback from anonymous online survey among potential applicants, the following changes were introduced:

New submission deadline:
30 September 2020, 3pm CEST.

Additional clarification round:
Clarification notes on 22 September

Shortened assessment timeline as
climate action cannot wait!

2. Implications of Covid-19 - Changes in the 7th Call – Documents

Additional Annex (optional):
enabling NSPs to explain the specific
circumstances arising from the
Covid-19 pandemic

Government endorsement as e-mail
accepted: proper endorsement letter
to be presented at the latest during
in-depth assessment

The General Information Document and application documents were updated to reflect these changes.

Structure of the Webinar

1. Basics on the NAMA Facility and its 7th Call
2. Implications of Covid-19 - Update

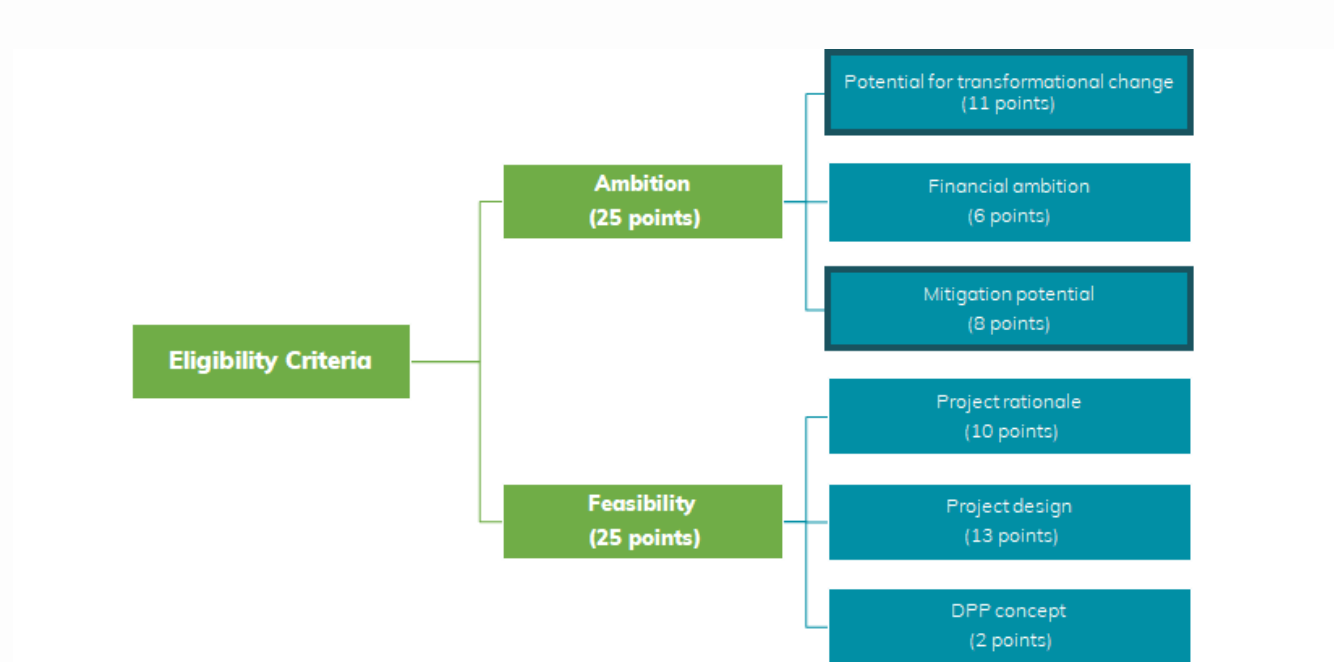
Q&A session

3. Deep-dive on selection criteria in 7th Call
Q&A session
4. Overview of selected FAQs
Q&A session

Structure of the Webinar

1. Basics on the NAMA Facility and its 7th Call
2. Implications of Covid-19 - Update
Q&A session
- 3. Deep-dive on selection criteria in 7th Call**
Q&A session
4. Overview of selected FAQs
Q&A session

3. Deep-Dive on Selection Criteria in 7th Call



For further details check pages 10-12 in the [7th Call General Information Document](#)

3. Deep-Dive on Selection Criteria in 7th Call

- Transformational Change



“Transformational change is a catalytic change in systems and behaviours resulting from disruptive climate actions that enable actors to shift to carbon-neutral pathways.”

- Strong national ownership
- In line with the Paris Agreement and countries’ Nationally Determined Contributions (NDCs)
- Impact beyond individual projects or interventions
- Mechanisms that trigger a self-reinforcing dynamic and prevent reversion, and
- Requires built-in incremental learning processes that allow fearless learning.

3. Deep-dive on selection criteria in 7th Call - Transformational Change

- **Strong national ownership**

- ⇒ Endorsement and commitment in letters from national ministries?
- ⇒ Are key national implementing partners on board?

- **In line with the UNFCCC Paris Agreement and countries' NDCs**

- ⇒ Relevance of the sector in national emissions?
- ⇒ Supports the implementation of the NDC or even goes beyond to increase the ambition level?

- **Impact beyond individual projects or interventions**

- ⇒ Embedded in a mitigation agenda in the respective sector?
- ⇒ Relevant scope of the NSP intervention?
- ⇒ Scaling and replication foreseen at national or regional level?

3. Deep-dive on selection criteria in 7th Call - Transformational Change

- **Mechanisms that trigger a self-reinforcing dynamic and prevent reversion**

- ⇒ Which co-benefits relevant for triggering a transformation beyond the NSP intervention?
- ⇒ Overcoming systematic barriers to mitigation in the sector?
- ⇒ If needed, trigger regulation and/or policy to reduce future GHG emissions?
- ⇒ Accelerate or initiate a reversed flow of funds or change in behavior
- ⇒ Is the change sustainable, i.e. irreversible and significant beyond the NSP intervention?



More information on [Transformational Change](#)

3. Deep-dive on selection criteria in 7th Call - Mitigation Potential

- **Underlying assumptions**

- ⇒ Transparency and plausibility of calculations, methodology, robustness of input data and sources?
- ⇒ Mitigation scenario build on a realistic timeline?
- ⇒ Is there a risk of rebound effects and/or leakage and if yes, how is it addressed?

- **Direct mitigation potential**

- ⇒ Is the direct mitigation potential significant?

- **Indirect mitigation potential**

- ⇒ Is the indirect mitigation potential significant?

- **Cost effectiveness of direct mitigation potential**

- ⇒ How does the direct mitigation potential compare to the funding requested from the NAMA Facility?

3. Deep-dive on selection criteria in 7th Call - Mitigation Potential



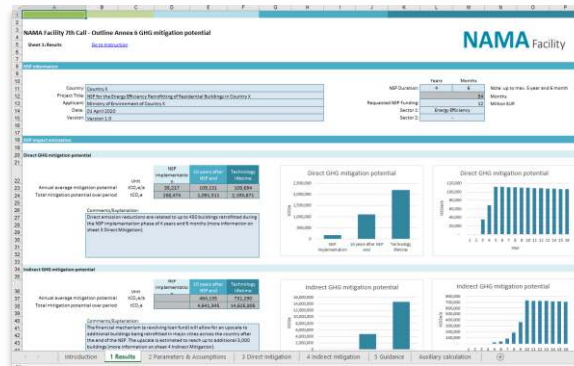
The completely **revised Annex 6** will help you to provide all information that we look for.



Remember provide information on the direct and indirect mitigation potential.



Take 26min to check out our [Annex 6 podcast](#) with an example how to fill in the table



Structure of the Webinar

1. Basics on the NAMA Facility and its 7th Call
2. Implications of Covid-19 - Update
Q&A session
3. Deep-dive on selection criteria in 7th Call
Q&A session
4. Overview of selected FAQs
Q&A session

Structure of the Webinar

1. Basics on the NAMA Facility and its 7th Call
2. Implications of Covid-19 - Update
Q&A session
3. Deep-dive on selection criteria in 7th Call
Q&A session
- 4. Overview of selected FAQs**
Q&A session

4. Selected Frequently Asked Questions - on Financial Mechanisms

- What financial mechanisms can be supported by the NSP?

Financial mechanisms ...

- Can include concessional loans, guarantee mechanisms, partial subsidies, results-based payments, etc.
 - Should enable leveraging of public and private funds
 - Should be most appropriate and feasible to overcome key barriers
 - Check out our webinar on Financial Mechanisms and our fictitious project example of Totinia
- Is it acceptable if the national government is fully involved but cannot directly financially contribute to the NSP funding?
 - In-kind contributions may be counted, but more weight is given to directly mobilized funds by the governments
 - What kind of information do you expect on the degree to which the funding is secured?
 - For each distinct funding source, the degree to which the funding has been secured should be clarified

4. Selected Frequently Asked Questions - on Eligibility of Technologies

- Are technological pilots eligible for funding?
 - If they are not yet commercially available on the global market, they are ineligible, whereas available technology in a new context is eligible
- Does a sector have to be mentioned in the NDCs?
 - The NSP should support the implementation of NDCs or at least demonstrate a link to the NDCs
- Are there any technologies excluded from support?
 - The mitigation potential of the technology needs to be clear and the NSP should aspire transformational change towards a carbon-neutral development pathway
 - Technologies focusing on fuel-switch or efficiency in fossil-fuel based power generation are likely to have some difficulty to demonstrate this

4. Selected Frequently Asked Questions - on Eligibility of Applicants

- Can an entity submit more than one application, or be involved in more in than one NSP Outline submission?
 - Yes, there is no limit
- What is the difference between an Applicant and an Applicant Support Partner?
 - The Applicant submits the NSP Outline to NAMA Facility
 - The NAMA Facility cannot directly contract national ministries due to administrative reasons, therefore an Applicant Support Partner (the legal entity) as contracting partner is required
- Can the Applicant Support Partner be a consortium?
 - In justified cases, yes. Please keep the number of consortium partners small and identify a lead consortium member as potential contractual partner

Structure of the Webinar

1. Basics on the NAMA Facility and its 7th Call
2. Implications of Covid-19 - Update
Q&A session
3. Deep-dive on selection criteria in 7th Call
Q&A session
4. Overview of selected FAQs

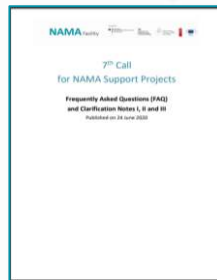
Q&A session

Central Documents and Information Sources

7th Call General Information Document (GID)



FAQ and Clarifications I, II, III published on 24 June 2020



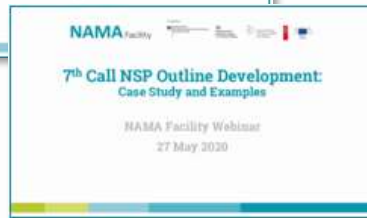
7th Call Application Documents (Outline and seven Annexes)



Monitoring and Evaluation Framework



Recorded NAMA Facility webinars



Annex 6 – Mitigation Potential – Video Podcast



Upcoming clarifications:

22 July, 25 August, 22 September



Looking Forward to Your NSP Outline Submission 30 September 2020, 3pm CEST

- NAMA Facility website: [all information on the 7th Call](#)
- Next clarification rounds: 22 July, 25 August, 22 September
- Contact the Technical Support Unit at contact@nama-facility.org